

TRACT 5,
BLOCK 44
(PLAT BOOK 2,
PAGES 45-54)

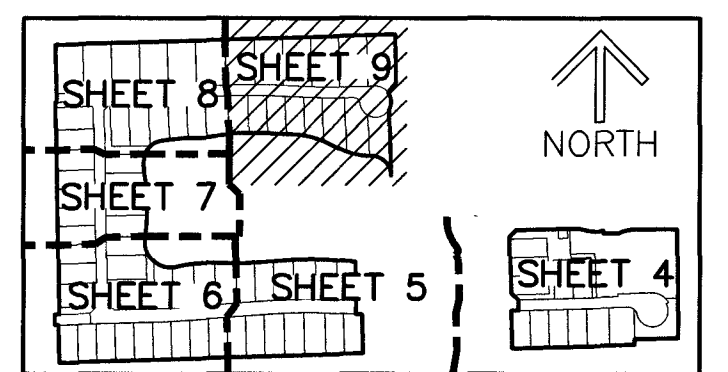
TRACT 6, BLOCK 44
(PLAT BOOK 2, PAGES 45-54)

VERDURA FARMS, PUD PLAT 2

BEING A REPLAT OF ALL OF PARCELS A, B AND C, VERDURA FARMS PUD, ACCORDING TO THE PLAT THEREOF,
AS RECORDED IN PLAT BOOK 140, PAGES 142 THROUGH 157 OF THE PUBLIC RECORDS OF PALM BEACH COUNTY, FLORIDA,
LYING IN SECTION 12, TOWNSHIP 45 SOUTH, RANGE 41 EAST, PALM BEACH COUNTY, FLORIDA.

THIS INSTRUMENT PREPARED BY
DAVID P. LINDLEY
OF
CAULFIELD & WHEELER, INC.
SURVEYORS - ENGINEERS - PLANNERS
7900 GLADES ROAD, SUITE 100
BOCA RATON, FLORIDA 33434 - (561)392-1991

PUBLISHED
COORDINATES (P)
N: 813104.948
E: 914529.790

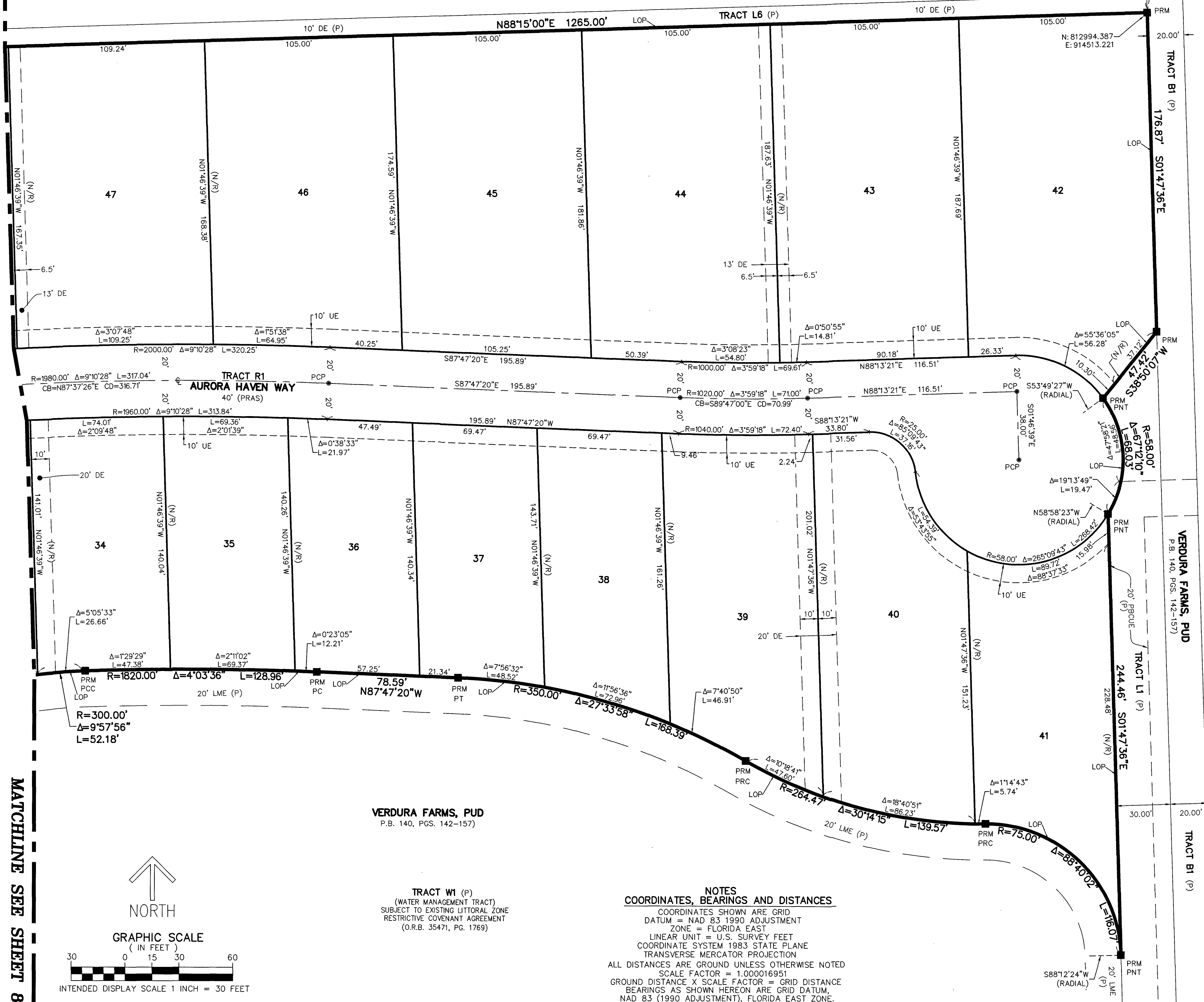


SHEET 9 Of 9

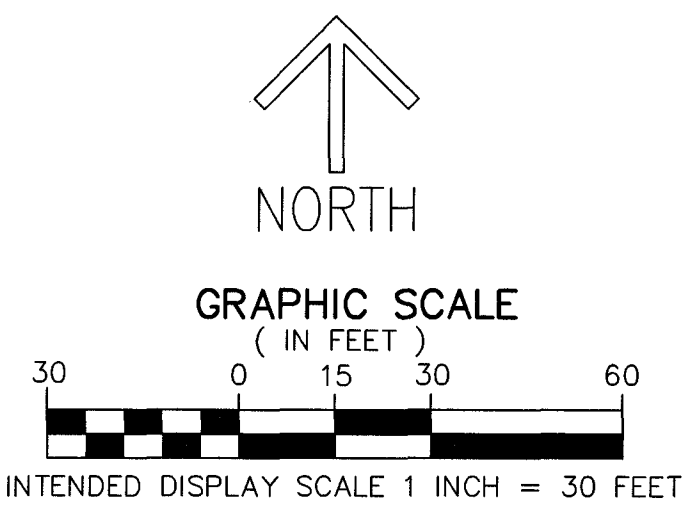
MATCHLINE SEE SHEET 8

MATCHLINE SEE SHEET 8

VERDURA FARMS, PUD
P.B. 140, PGS. 142-157
TRACT B1 (P)



- LEGEND/ABBREVIATIONS:**
- P.B. - PLAT BOOK
 - O.R.B. - OFFICIAL RECORDS BOOK
 - PG(S). - PAGE(S)
 - Δ - DELTA (CENTRAL ANGLE)
 - CB - CHORD BEARING
 - CD - CHORD DISTANCE
 - R - RADIUS
 - L - ARC LENGTH
 - C - CENTERLINE
 - E - EASTING (WHEN USED WITH COORDINATES)
 - N - NORTHING (WHEN USED WITH COORDINATES)
 - DE - DRAINAGE EASEMENT
 - LME - LAKE MAINTENANCE EASEMENT
 - LOP - LIMITS OF PLAT
 - PBCUE - PALM BEACH COUNTY UTILITY EASEMENT
 - R/W - RIGHT-OF-WAY
 - UE - UTILITY EASEMENT
 - 12-45-41 - SECTION 12, TOWNSHIP 45 SOUTH, RANGE 41 EAST
 - PUD - PLANNED UNIT DEVELOPMENT
 - PC - POINT OF CURVATURE
 - PT - POINT OF TANGENCY
 - PNT - POINT OF NON-TANGENCY
 - PRC - POINT OF REVERSE CURVATURE
 - LWDD - LAKE WORTH DRAINAGE DISTRICT
 - LB - LICENSED BUSINESS
 - FDOT - FLORIDA DEPARTMENT OF TRANSPORTATION
 - PRAS - PRIVATE RESIDENTIAL ACCESS STREET
 - NAD - NORTH AMERICAN DATUM
 - PRM - PERMANENT REFERENCE MONUMENT
 - FPL - FLORIDA POWER & LIGHT COMPANY
 - PRM - DENOTES SET PERMANENT REFERENCE MONUMENT 4" X 4" X 24" CONCRETE MONUMENT WITH ALUMINUM DISK STAMPED "C&W PRM LB3591", UNLESS OTHERWISE STAMPED "PCP LB3591"
 - PCP - DENOTES SET PERMANENT CONTROL POINT NAIL AND METAL DISK STAMPED "PCP LB3591"
 - ▲ - DENOTES SET PERMANENT REFERENCE MONUMENT NAIL AND DISC STAMPED "PRM" LB 3591
 - (P) - VERDURA FARMS PUD (PLAT BOOK 140, PAGES 142-157)



VERDURA FARMS, PUD
P.B. 140, PGS. 142-157

TRACT W1 (P)
(WATER MANAGEMENT TRACT)
SUBJECT TO EXISTING LITTORAL ZONE
RESTRICTIVE COVENANT AGREEMENT
(O.R.B. 35471, PG. 1769)

NOTES
COORDINATES, BEARINGS AND DISTANCES
COORDINATES SHOWN ARE GRID
DATUM = NAD 83 1990 ADJUSTMENT
ZONE = FLORIDA EAST
LINEAR UNIT = U.S. SURVEY FEET
COORDINATE SYSTEM 1983 STATE PLANE
TRANSVERSE MERCATOR PROJECTION
ALL DISTANCES ARE GROUND UNLESS OTHERWISE NOTED
SCALE FACTOR = 1.000016951
GROUND DISTANCE X SCALE FACTOR = GRID DISTANCE
BEARINGS AS SHOWN HEREON ARE GRID DATUM,
NAD 83 (1990 ADJUSTMENT), FLORIDA EAST ZONE.

TRACT 10, BLOCK 44
PALM BEACH FARMS COMPANY PLAT NO. 3
(PLAT BOOK 2, PAGES 45-54)

VERDURA FARMS, PUD
P.B. 140, PGS. 142-157

TRACT B1 (P)